

Mort Street, Cranley

TOOWOOMBA SECOND RANGE CROSSING

As part of work on the Toowoomba Second Range Crossing (TSRC) a grade separated interchange will be constructed at the northern end of Mort Street, Cranley, connecting to Hermitage Road and the TSRC.

This involves constructing:

- three roundabouts, with a network of new roads connecting to the TSRC, Mort Street, Baillie Henderson Hospital and Hermitage Road
- two on-ramps, enabling motorists to access the TSRC in both directions
- two off-ramps, enabling eastbound and westbound motorists to exit the TSRC
- a bridge, carrying the TSRC over Mort Street and the rail line
- realigned entrance into Baillie Henderson Hospital off Mort Street
- an approximately 1.1km long road, connecting Hermitage Road to the Toowoomba Waste Management Centre (TWMC), providing access for commercial vehicles.

To accommodate the TSRC, Hermitage Road will be permanently realigned into east and west sections. The section of Hermitage Road east of the TWMC will remain accessible from the northern end of Mort Street. A U-turn bay will be installed where Hermitage Road (east) meets the TSRC, enabling heavy vehicles to turn around safely.

An approximately 1.9km long section of road will be constructed to connect Mort Street with the western section of Hermitage Road, Tor Street and Ganzer Road. The Tor Street and Hermitage Road intersection will also be upgraded.



Mort Street Connection Road

Toowoomba Regional Council (TRC) is upgrading Mort Street from the Jellicoe Street and West Street intersection to provide a connection to the TSRC. The project is planned to be completed in conjunction with the completion of the TSRC in 2018. Please refer to the TRC website for more information about the Mort Street Connection Road.

Goombungee Road

A bridge for the TSRC will be constructed over Goombungee Road at Harlaxton. There will be no direct connection from the TSRC to Goombungee Road.



Construction timing

Works around Mort Street and Hermitage Road will occur from mid 2016 and will be completed prior to

construction starting on the TSRC alignment and interchange. This is to maintain traffic access through the area during TSRC construction. It is anticipated that the new Mort Street Connection Road and access road into the TWMC will be open in early to mid 2017 and the existing road alignment will be permanently closed to traffic.



Traffic impacts

During construction road users will experience changed traffic conditions including reduced speed limits, lane closures, short delays and detours. Traffic control and signage will be used, as required, to direct motorists safely through the work area. Any impacts or possible delays during construction will be communicated ahead of time to allow motorists time to seek alternatives.



Working hours

Most works will be undertaken during standard construction hours, which are from 6:30am to 6:30pm, Monday to Saturday. The project team will inform residents and businesses in advance if Sunday works or night works are required.



Australian Government

BUILDING OUR FUTURE



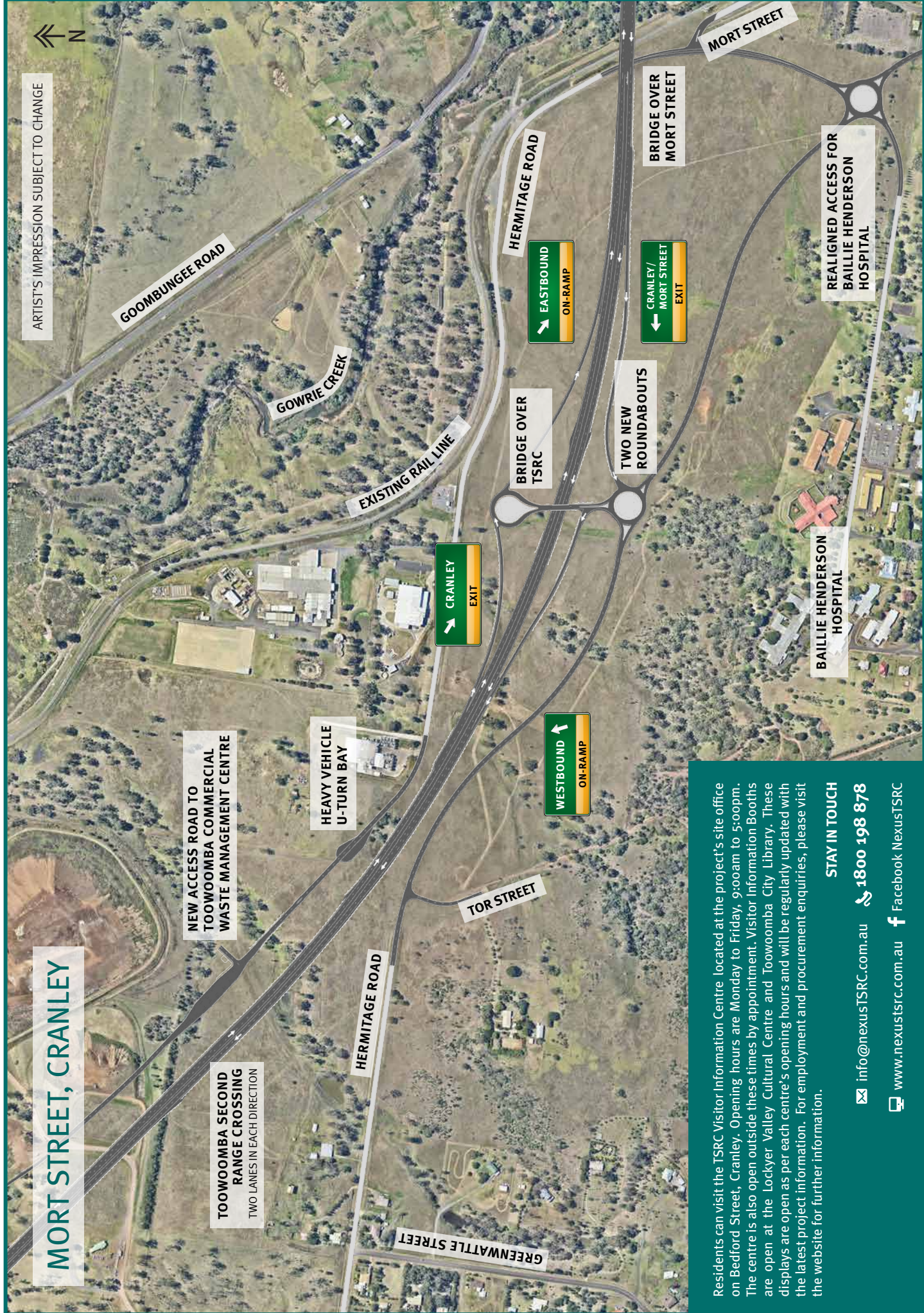
nexus
infrastructure
A greater connection



Queensland Government

MORT STREET, CRANLEY

ARTIST'S IMPRESSION SUBJECT TO CHANGE



Residents can visit the TSRC Visitor Information Centre located at the project's site office on Bedford Street, Cranley. Opening hours are Monday to Friday, 9:00am to 5:00pm. The centre is also open outside these times by appointment. Visitor Information Booths are open at the Lockyer Valley Cultural Centre and Toowoomba City Library. These displays are open as per each centre's opening hours and will be regularly updated with the latest project information. For employment and procurement enquiries, please visit the website for further information.

STAY IN TOUCH

- ✉ info@nexusTSRC.com.au
- ☎ **1800 198 878**
- 🌐 www.nexusTSRC.com.au
- 📘 Facebook NexusTSRC