

Toowoomba-Cecil Plains Road, Wellcamp

TOOWOOMBA SECOND RANGE CROSSING

As part of work on the Toowoomba Second Range Crossing (TSRC), a grade separated interchange will be constructed at Toowoomba-Cecil Plains Road, Wellcamp.

This involves constructing:

- two on-ramps, enabling motorists to access the TSRC in both directions
- two off-ramps, enabling eastbound and westbound motorists to exit the TSRC
- a three-span bridge, taking the TSRC over Toowoomba-Cecil Plains Road
- two signalised intersections to enhance safety for all road users.

A 1.1km long section of Toowoomba-Cecil Plains Road will be upgraded to accommodate the new interchange.



Access to Brisbane West Wellcamp Airport

The Toowoomba-Cecil Plains Road interchange will serve as a connection point and is located approximately 2km from the airport.



Construction timing

Works to construct the Toowoomba-Cecil Plains Road interchange at Wellcamp are anticipated to occur from late 2016 until mid 2018. Local residents will be kept updated about construction timeframes.



Working hours

Works will be undertaken during standard construction hours, which are 6:30am to 6:30pm, Monday to Saturday.

Out-of-hours works may occasionally occur between 8:00pm and 5:00am. Residents will be notified prior to out-of-hours works commencing.



Traffic impacts

While traffic access will be maintained along Toowoomba-Cecil Plains Road during construction, road users will experience changed traffic conditions, including reduced speed limits, lane closures and short delays. Traffic control and signage will be used, as required, to direct motorists safely through the work area.

Nexus is committed to keeping the community informed about upcoming works and possible traffic impacts.

Stay in touch

Residents can visit the TSRC Visitor Information Centre located at the project's site office on Bedford Street, Cranley. Opening hours are Monday to Friday, 9:00am to 5:00pm. The centre is also open outside these times by appointment. Visitor Information Booths are open at the Lockyer Valley Cultural Centre and Toowoomba City Library. These displays are open as per each centre's opening hours and will be regularly updated with the latest project information. For employment and procurement enquiries, please visit the website for further information.

1800 198 878

info@nexusTSRC.com.au

Facebook NexusTSRC

www.nexusTSRC.com.au



Australian Government

BUILDING OUR FUTURE

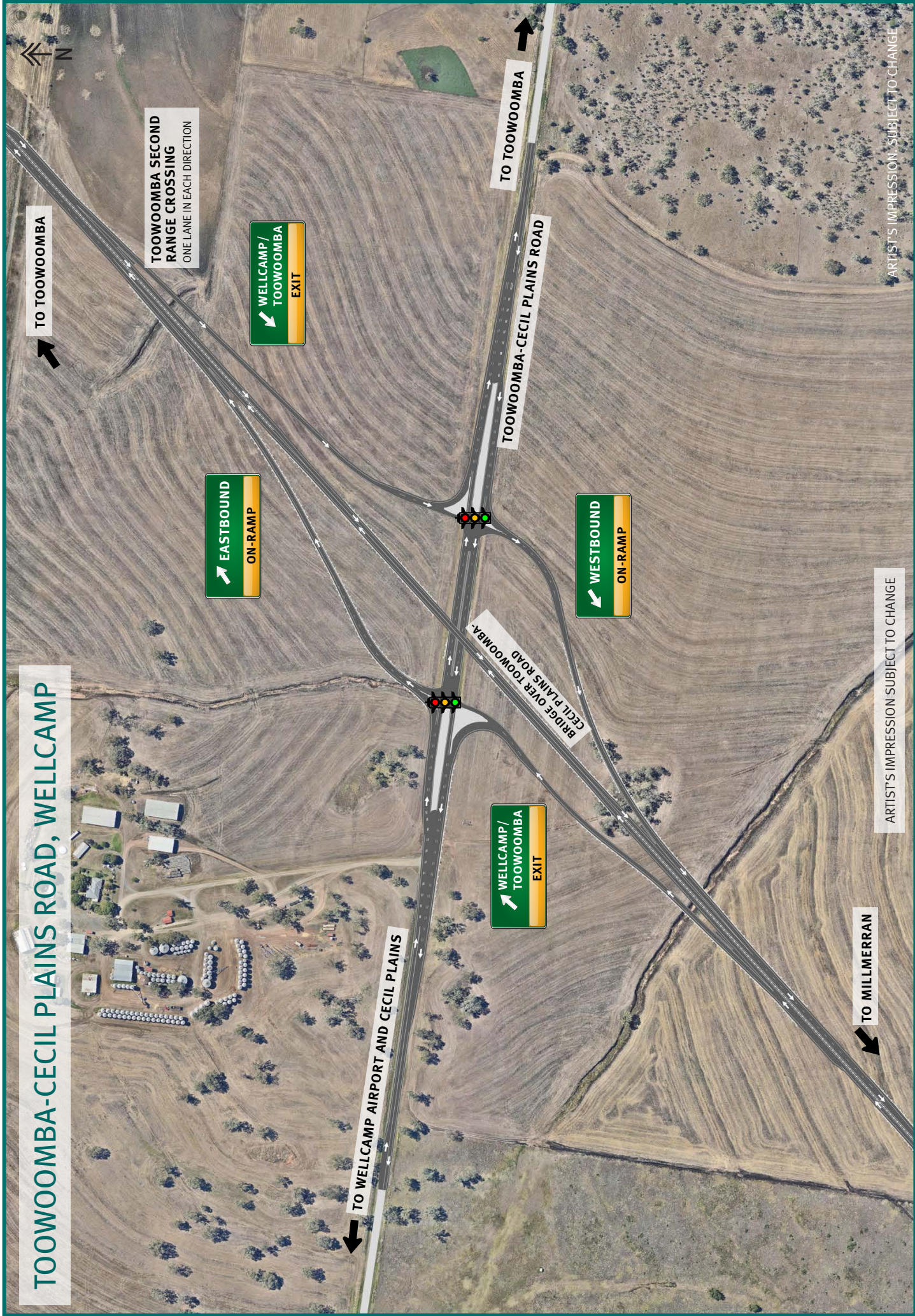


nexus
infrastructure
A greater connection



Queensland Government

TOOWOOMBA-CECIL PLAINS ROAD, WELLCAMP



TO TOOWOOMBA

TOOWOOMBA SECOND RANGE CROSSING
ONE LANE IN EACH DIRECTION

EASTBOUND
ON-RAMP

WELLCAMP/
TOOWOOMBA
EXIT

WELLCAMP/
TOOWOOMBA
EXIT

WESTBOUND
ON-RAMP

TOOWOOMBA-CECIL PLAINS ROAD

BRIDGE OVER TOOWOOMBA-
CECIL PLAINS ROAD

TO WELLCAMP AIRPORT AND CECIL PLAINS

TO TOOWOOMBA

TO MILLMERRAN

ARTIST'S IMPRESSION - SUBJECT TO CHANGE

ARTIST'S IMPRESSION - SUBJECT TO CHANGE